

DS
DENTAL



***easy-graft*[®]CLASSIC**

injectable

insitu hardening

100% synthetic bonegraft

sticky granules

bionic

A success story from the start-up to a specialist for bone graft biomaterials

Together with leading dentists of the University of Zurich and experts in the field of biomaterials at ETH Zurich, we started in 1999 to develop a new therapy with the aim to prevent the atrophy of the alveolar crest after tooth extraction.

First, we developed a phase pure β -Tricalciumphosphate (β -TCP) granulate for bone defect filling: **calc-i-oss**. Its high interconnected porosity, superior purity and histological prove of complete resorption is highly valued by the users.



Thereafter, we succeeded in coating the granules with a micro-meter thick layer of polylactic acid. This allows the user to glue the granules together. Thus, our product **RootReplica** was born. This exact copy of the extracted tooth root made from a

resorbable bone graft stops post extraction bleeding, prevents the loss of the coagulum and maintains the alveolar ridge in both height and width. This therapy creates the optimal condition for any subsequent prosthetic treatment.

Our newest achievement is the development of our "Biolinker" – an activator which transforms the coated granules into a sticky mass and thus allows the bone graft to be applied directly from its syringe to the defect. In contact with blood the biomaterial solidifies and forms a defect-analog, mechanically stable, but porous solid body, which will be replaced over time with bone tissue. We call our product easy-graft: there is no "easier" way to fill bone defects.

easy-graft bases on our long term experience in developing bone graft materials. It allows the user to treat bone defects in periodontology, oral surgery, implantology and after tooth extraction in the most simple and fastest way imaginable. Just try it out!

I hope I was able to spark your interest in our biomaterials. Thank you for your trust in our products.

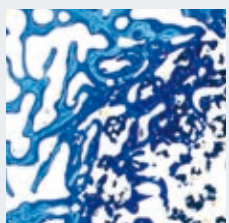
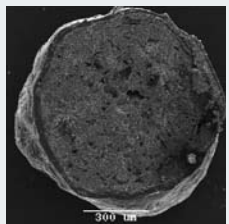
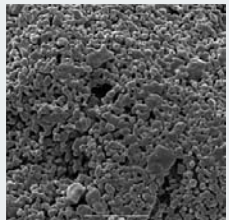
Faithfully yours,

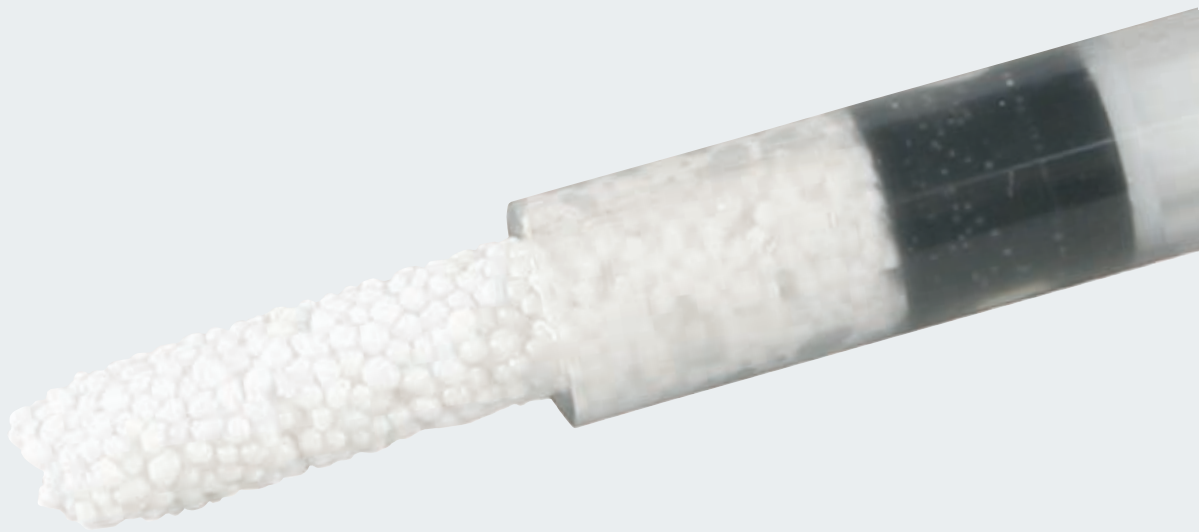


Dr. Kurt Ruffieux
CEO Degradable Solutions AG

High clinical benefits due to an innovative biomaterial concept

- Osteo-regeneration and complete resorption of graft due to phase pure β -Tricalciumphosphate
- Ingrowth of cells due to interconnected open porosity
- High porosity due to bionic structure of granules
- Injectable putty due to fast resorbing polylactic acid coating
- Prevention of bacterial colonisation due to dense coating
- No loss of granules due to solid body formation in situ
- Blood uptake and tissue ingrowth due to porosity between granules
- Hemostyptic effect
- High biocompatibility demonstrated in histologic sections
- Direct bone contact promotes tissue ingrowth
- Bone formation in parallel to graft degradation

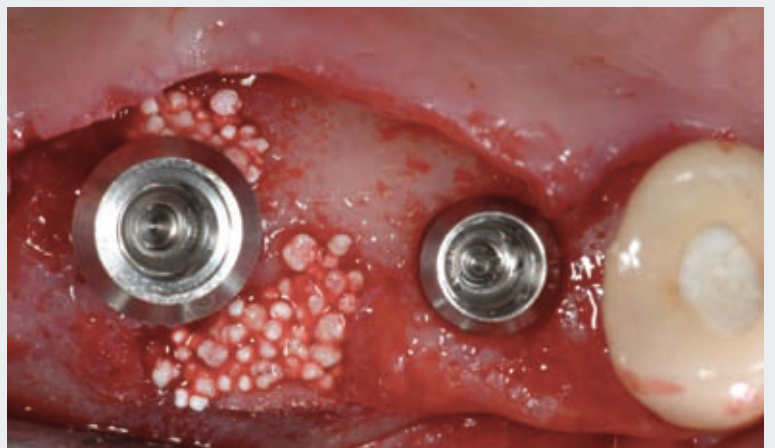




- Clean defect using indication specific standard procedure
- Inject *easy-graft®CLASSIC* from the syringe into the defect
- Mold the sticky granules to fill the defect with a condenser
- Excess granules may be removed easily with a scaler
- Suture the wound as well as the indication allows.



Socket preservation

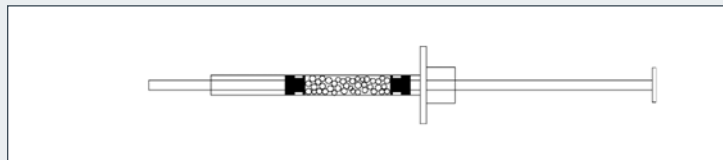


Easy to use: mix – apply

easy-graft[®]*CLASSIC* consists of the unique biomaterial: bioceramic granules with a sticky surface. Apply directly into the defect, the bone graft will harden in situ within minutes...

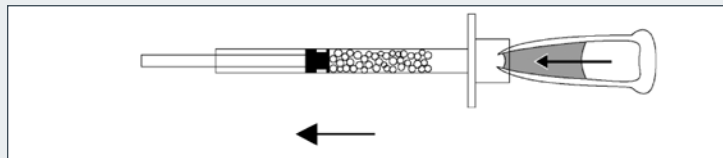
Step by step...

Open the pouch with the syringe containing *easy-graft*[®]*CLASSIC* granules, open the pouch with the Biolinker.

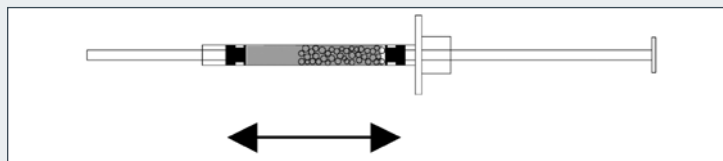


Fill the Biolinker into the syringe.

Mix both components and discard excess Biolinker.



The granules are now sticky and may be applied directly into the bone defect.



Literatur about DS Biomaterials

Reichhardt, D. et al. 2006. Injectable and PLGA coated -TCP granules hardening in situ: an in vitro study. Swiss Conference on Biomaterials, May 10th. - Thoma, K. et al. 2006. Bioabsorbable root analogue for closure of oroantral communications: A prospective case report. Oral Surg Oral Med Oral Pathol Oral Radiol Endod, in press. - Nair, R. et al. 2006. Biocompatibility of -Tricalcium Phosphate Root Replicas in Porcine Tooth Extraction Sockets – A Correlative Histological, Ultrastructural, and X-ray Microanalytical Pilot Study. Biomaterials Applications, 0: 1-18, Jan 27.- Nair, R. et al. 2004. Observations on healing of human tooth extraction sockets implanted with bioabsorbable poly(lactide-polyglycolic acids (PLGA) copolymer root replicas: A clinical, radiographic and histological follow-up report of 8 cases. Oral Surg Oral Med Oral Pathol Oral Radiol Endod, 97: 559-69, May. - Nair, R. et al. 2004. -TCP/PLGA open porous scaffolds for the prevention of alveolar bone loss after tooth extraction: Evaluation in a mini-pig model. World Biomaterials Congress, May 17-21. - Maspero, FA, Ruffieux, K. 2004. -TCP/PLGA open porous scaffolds for the prevention of alveolar bone loss after tooth extraction: scaffold characterization and in vitro degradation behaviour. World Biomaterials Congress, May 17-21. - Reichhardt, D., Ruffieux, K. 2004. Supporting Literature and References for calc-i-oss and calc-i-oss Ortho. TM-056, Dec 14. - Schmidlin, P. et al. 2004. Alveolarkammprävention nach Zahnextraktion – eine Literaturübersicht, Schweiz Monatsschr Zahnmed, 114: 328-336, April. Schugg, J. et al. 2002. Prävention der Alveolarkammatrophy nach Zahnextraktion durch Wurzelreplikas. DZW, 47: 14-15, Feb. - Maspero, FA et al. 2002. Resorbable defect analog PLGA scaffolds using CO2 as solvent: Structural characterization, J Biomed Mater Res, 62: 89-98. - Heidemann, W. et al. 2001. Degradation of poly(D,L)lactide implants with or without addition of calciumphosphates in vivo. Biomaterials, 22: 2371-2381. - Maspero, FA et al. 1999. Comparisons of the Degradation Behavior of two Open Porous PLGA-Scaffolds, Tissue Engineering Congress. - Suhonen, J., Meyer, B. 1996. Polylactic acid (PLA) root replica in ridge maintenance after loss of a vertically fractured incisor. Endod Dent Trumatol, 12: 155-160. - Suhonen, J. et al. 1995. Custom made Polyglycolic acid (PGA)-root replicas placed in extraction sockets of rabbits. Dt. Z Mund Kiefer Gesichts Chir. 19: 253-257.

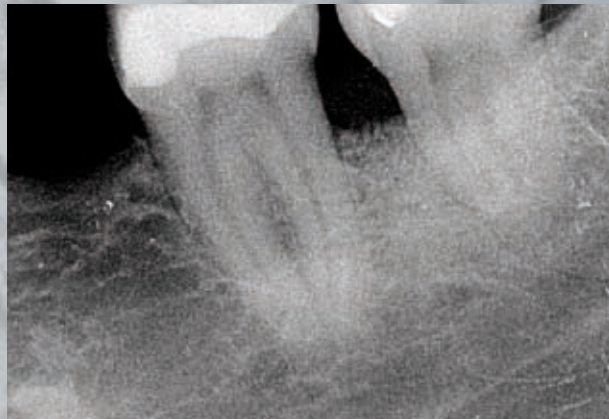
Simplify your therapy

Straight from the syringe into the defect ...

easy-graft®CLASSIC is the first biomaterial applied straight from the syringe into the defect where it subsequently hardens and creates a porous but stable bone graft. During the application the granules stick together and stay at the defect site.

easy-graft®CLASSIC is 100% synthetic, completely resorbable and replaced by autologous bone tissue within months.

easy-graft®CLASSIC is intended for use for all dental indications where bone grafts are needed.



benefits in periodontology

- easy modelling in the pocket
- the sticky granules stay in the defect
- no membrane needed
- insitu hardening
- reduction of pocket depth from 7up to 2 mm!

easy-graft®CLASSIC

Product	easy-graft® 150		easy-graft® 400	
Reference no.	C11-012	C11-013	C11-002	C11-003
Units	3 x 0.15 ml	6 x 0.15 ml	3 x 0.4 ml	6 x 0.4 ml
Granule size	500 – 630 µm	500 – 630 µm	500 – 1'000 µm	500 – 1'000 µm
Material	Pure phase β-tricalcium phosphate (>99%)			
Indication	Small defects in oral surgery, implantology, socket preservation, and sinus floor elevation			



easy-graft®CRYSTAL

Reference no.	C15-012	C15-013	C15-002	C15-003
Units	3 x 0.15 ml	6 x 0.15 ml	3 x 0.4 ml	6 x 0.4 ml
Granule size	450 – 630 µm	450 – 630 µm	450 – 1'000 µm	450 – 1'000 µm
Material	Biphasic calcium phosphate (60% HA / 40% β-TCP)			
Indication	Large bone defects and patients with reduced bone regeneration potential, e.g. in cystectomy, socket preservation, sinus floor elevation, bone spreading, guided bone regeneration (GBR), periodontal defects, periimplantitis			



calc-i-oss®

Reference no.	A02-103B	A02-103C	A02-103D
Units	3 x 0.5 g	3 x 1.0 g	3 x 2.0 g
Granule size	315 – 500 µm	500 – 1'000 µm	1'000 – 1'600 µm
Material	Pure phase β-tricalcium phosphate (>99%)		
Indication	General bone defects in oral surgery and implantology		



RootReplica™

The leading product against atrophy of the alveolar ridge after tooth extraction
Recommended indications: Alveoles therapy after tooth extraction

RootReplica™ Implant Kit Set of 3 Implants incl. Impression material
3 scalpels, biomaterial (granules + membrane)
Reference number C 01- 003

RootReplica™ Equipment Kit Replicator, heated Condenser, Impression gun
Reference number F 07- 01005



DS

DENTAL

Degradable Solutions AG
Wagistrasse 23
CH-8952 Schlieren/Zurich
Phone +41 43 433 62 60
Fax +41 43 433 62 61
www.degradable.ch
dental@degradable.ch